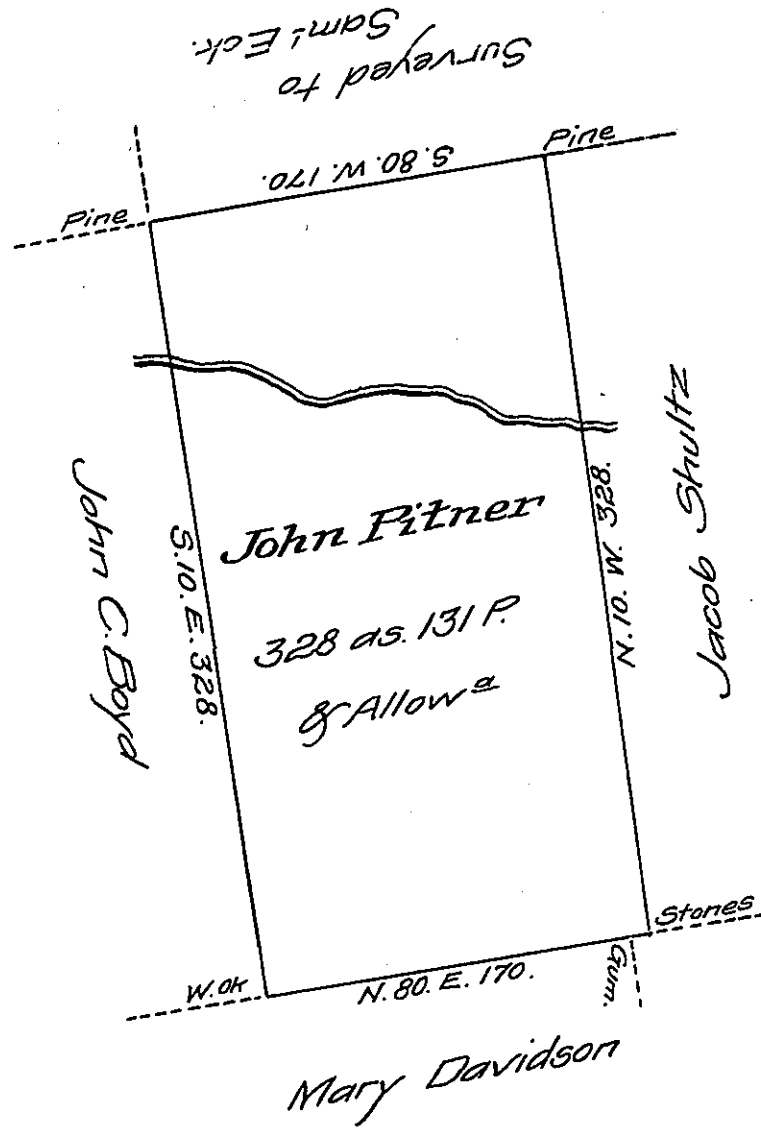


FORM NO. 1.



This Survey is made on the ground called the Assyluz C<sup>e</sup> Lands but having no Dft. I cannot lay down the Survey which it is supposed to cover  
 T. Woodside D.S.

The Dft. of a tract of land Situate in Catewissa Township  
 Columbia County and on the waters of Shomokin Creek Surveyed unto  
 John Pitner on the 20<sup>th</sup> day of January 1830 by Virtue of his war-  
 rant dated Jan<sup>y</sup> 12<sup>th</sup> 1830 Containing three hundred & twenty eight  
 acres and the Usual allowance

Thos Woodside D.S.

Gabriel Heister Esq<sup>r</sup>  
 Surveyor General.

IN TESTIMONY that the above is a copy of the original remaining on file in  
 the Department of Internal Affairs of Pennsylvania, made  
 comformably to an Act of Assembly approved the 16th day of  
 February 1833, I have hereunto set my hand and caused  
 the Seal of said Department to be affixed at Harrisburg,  
 this twenty third day of October 1907.

*Henry Howell*  
 Secretary of Internal Affairs.